

# WILDLIFE PICTURE INDEX: ROY'S REDWOOD & FRENCH RANCH

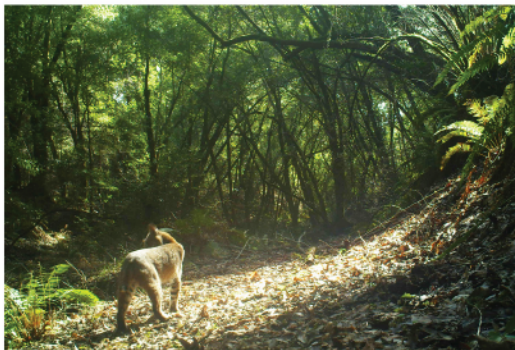
Some of the largest redwoods in Marin County are found at Roy's Redwoods Preserve, which overlooks the San Geronimo Valley, and offers sweeping views of Mt. Tam to the east and Mt. Wittenberg to the west. Combined with the neighboring French Ranch Open Space Preserve, these lands cover a large portion of the Lagunitas Creek watershed.

Eighteen camera stations were installed in late 2014 to help us learn more about how wildlife use these preserves' different habitats. Forty-four percent of these cameras were placed in open habitats (e.g. grasslands), 33% were in closed habitats (e.g. forests), and the rest were in mixed habitat types. This summary includes results from September 2014 through December/January 2015.

The species of mammals seen on camera are those that would be expected in the kinds of habitats surveyed. Though all carnivore species were well represented, these two sites had the highest detection rate for coyotes, but the lowest detection rate for gray foxes. As with many of the other sites in the Wildlife Picture Index Project area, the most photographed species was black-tailed deer.



3,173  
WILDLIFE PHOTOS CAPTURED



## NUMBER OF MAMMALIAN DETECTIONS & SPECIES

