

# WILDLIFE PICTURE INDEX: MARIN MUNICIPAL WATER DISTRICT

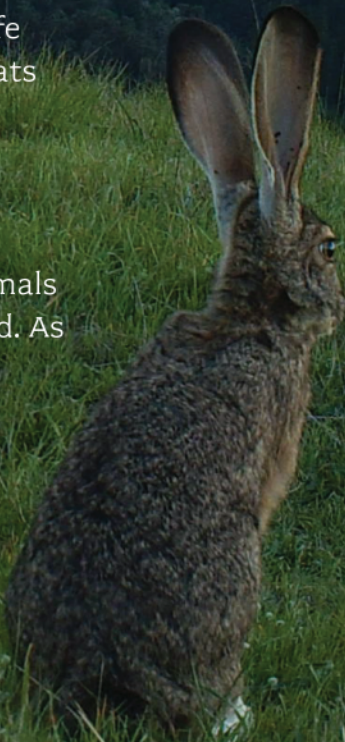
Just on the other side of San Geronimo Ridge from the Gary Giacomini Open Space Preserve, the Marin Municipal Water District watershed lands above Kent Lake are part of a diverse mosaic of habitats including beautiful green serpentine rock outcrops, chaparral, and large swaths of forest.

Twenty-nine camera stations were installed in late 2014 to help us learn more about how wildlife use the habitats in this area. Twenty-three percent of these cameras were placed in open habitats (e.g. grasslands), 23% were in closed habitats (e.g. forests), and the rest were in mixed habitat types. This summary includes results from September 2014 through February 2015.

This is one of only two WPI sites that have detected spotted skunks, and the only one where a mountain lion was caught on camera during this sample period. In general, the species of mammals documented so far are those that would be expected in the kinds of habitats that were surveyed. As with many of the other sites in the Wildlife Picture Index Project area, black-tailed deer are the most commonly photographed species.



4,427  
WILDLIFE PICTURES CAPTURED



## NUMBER OF MAMMALIAN DETECTIONS & SPECIES

