



MARIN MUNICIPAL WATER DISTRICT

Posting Date: September 19, 2017

220 Nellen Avenue Corte Madera CA 94925-1169

www.marinwater.org

NOTICE OF SPECIAL MEETING BOARD OF DIRECTORS/ WATERSHED COMMITTEE*

Notice is hereby given that a Special Meeting of the Marin Municipal Water District's Board of Directors/ Watershed Committee will be held as follows:

MEETING DATE: Thursday, September 21, 2017

TIME: 1:30 p.m.

LOCATION: 1) MMWD Board Room, 220 Nellen Ave., Corte Madera, CA 94925
2) 838 Marin Drive, Mill Valley, CA (Director Koehler)**
3) Contractors State License Board, 9821 Business Park Drive, Sacramento, CA (Director Russell)**

AGENDA

| ITEM | RECOMMENDATION | APPROX. START |
|---|----------------|---------------|
| <input type="checkbox"/> CALL TO ORDER | | 1:30 p.m. |
| <input type="checkbox"/> ADOPT AGENDA | | 1:31 p.m. |
| <input type="checkbox"/> PUBLIC EXPRESSION** | | 1:32 p.m. |
| <input type="checkbox"/> CALENDAR | | |
| 1. Minutes of Thursday, June 15, 2017 Meeting | Approve | 1:37 p.m. |
| 2. Launch of Emig ADA Cabin at West Point Inn | Information | 1:38 p.m. |
| 3. CCNB Contract Agreement | Recommend | 1:50 p.m. |
| 4. Azalea Hill IS/MND | Information | 1:55 p.m. |
| 5. Park Ranger Video | Information | 2:10 p.m. |
| 6. Draft 2018 TLC Work Plan | Information | 2:30 p.m. |
| Adjourn | | 2:40 p.m. |


Stephanie Eichner-Gross
Board Secretary

MMWD BOARD OF DIRECTORS:, Larry Bragman, Jack Gibson, Cynthia Koehler, Armando Quintero, Larry Russell

*The designated chair is Director Bragman and vice chair is Director Quintero Other board members may attend as they wish.

**One or more directors may participate in this meeting via teleconference. The teleconference location(s) is listed above. Members of the public are welcome to attend the meeting at either location.

†Anyone wishing to speak on an item other than those listed on this agenda will be recognized at this time. We ask any person wishing to be heard to come to the podium to address the board and state your name and address for the public record. A 3-minute limit is customary; however the committee chair may adjust the actual time allotted to accommodate the number of speakers.

- over -

ADA NOTICE AND HEARING IMPAIRED PROVISIONS: The board room is equipped with sound amplifying units for use by the hearing impaired. The units operate in conjunction with the room's sound system. You may request the personal sound amplifier from the Board Secretary for use during meetings.

In accordance with the Americans with Disabilities Act and California Law, it is the policy of the Marin Municipal Water District to offer its public programs, services, and meetings in a manner that is readily accessible to everyone, including those with disabilities. If you are disabled and require a copy of a public hearing notice, an agenda, and/or agenda packet in an appropriate alternative format, or if you require other accommodation, please contact Stephanie Eichner-Gross at (415) 945-1448, at least two days in advance of the meeting. Advance notification within this guideline will enable the district to make reasonable arrangements to ensure accessibility.

* * * * *

FUTURE BOARD OF DIRECTORS/ WATERSHED COMMITTEE MEETINGS:

| | |
|--|-----------------|
| Thursday, December 21, 2017, 1:30 p.m. | MMWD Board Room |
| Thursday, March 15, 2018, 1:30 p.m. | MMWD Board Room |



**MARIN MUNICIPAL
WATER DISTRICT**

ITEM No. 1

MEETING DATE: September 21, 2017

MEETING: Board of Directors /
Watershed
Committee

STAFF REPORT

SUBJECT: Minutes of June 15, 2017

SUBMITTED BY: Mike Swezy, Watershed Manager, Facilities and Watershed
Crystal Yezman, Division Manager
Facilities and Watershed Division

RECOMMENDED ACTION: Approve

ATTACHMENTS:

1. Minutes of June 15, 2017 Watershed Committee Meeting

**MARIN MUNICIPAL WATER DISTRICT
BOARD OF DIRECTORS / WATERSHED COMMITTEE**

IN ATTENDANCE:

Directors present: Larry Bragman, Armando Quintero and
Larry Russell (phone)

Directors absent: Jack Gibson and Cynthia Koehler

CALL TO ORDER: Director Bragman called the meeting to order at 1:35 pm.

ADOPT AGENDA: By simple motion, the agenda was adopted with a roll call with all Directors in favor.

PUBLIC EXPRESSION: Public comments included California laws for e-bikes and a request was made to create a new policy to allow e-bikes on the Marin Municipal Water District Watershed.

Director Bragman asked to correct his comment from the previous Watershed Committee meeting regarding listing glyphosates under Prop. 165 being upheld by the Superior Court in Fresno. The proposition was 65, not 165. Larry Russell seconded the modification and the change was accepted with a Director roll call.

ITEM 1. MINUTES OF MARCH 16, 2017 MEETING

By simple motion, the minutes were adopted as submitted.

ITEM 2. WEST PEAK RESTORATION UPDATE

Mike Swezy, Watershed Manager briefly updated the committee about the site history of West Peak and introduced Claire Mooney, Deputy Director of Planning and Design with the Golden Gate National Parks Conservancy (GGNPC). Claire stated a project team including Marin Municipal Water District (MMWD), GGNPC and other consultants has been created to address the removal of hazardous materials and remaining structures, enhance wetlands to restore and naturalize the site, restore natural native plant habitat, naturalize the topography and restore the visitor access to be consistent with the restoration goals.

Initial cleanup and mapping of the area has begun and restoration design groups involved in the restoration of Mount Umunhum, a former Air Force base in the South Bay, have been hired to look at environmental hazards for costs of the project and the resource value of West Peak.

The team has calendared future events this fall to discuss the progress of the project. Implementation of all projects on West Peak would require the MMWD Board approval. Director Russell expressed his concerns about the cost of the restoration. Director Quintero asked about the funding makeup of the Mount Umunhum restoration project for comparison.

A member of the public asked if there was an opportunity to help support the project. Mike offered the West Peak Restoration Alternatives flyer for additional information and said there would be presentations to local groups about this project in the future.

ITEM 3. JOINT EXERCISE OF POWERS AGREEMENT FOR PROCESSING PARKING CITATIONS AND DISSOLUTION OF THE MARIN PARKING AUTHORITY, A JOINT POWERS AUTHORITY

Don Wick, Watershed Chief Ranger said the Marin County agencies (County of Marin, nine cities, Golden Gate Bridge District, Marin Community College District and MMWD) have been in the Marin Parking Authority (MPA), a joint powers authority, since 1982. The agencies are proposing dissolving the MPA to create a new agreement. The process of citations would not change, but the agreement would streamline the administration and have the Marin County Sheriff's Office assume the administrative functions.

Staff requests that the Watershed Committee refer this item to the Board of Directors with a recommendation to approve authorization of the general manager to execute a Joint Exercise of Powers Agreement for processing parking citations. The motion was approved by the Directors.

ADJOURNMENT

There being no further business, the meeting of June 15, 2017 adjourned at 2:30 p.m.



MARIN MUNICIPAL WATER DISTRICT

ITEM No. 2
MEETING DATE: September 21, 2017
MEETING: Board of Directors /
Watershed
Committee

STAFF REPORT

SUBJECT: Launch of Emig ADA Cabin at West Point

SUBMITTED BY: Mike Swezy, Watershed Resources Manager, Facilities and Watershed
Crystal Yezman, Facilities and Watershed Division Manager

RECOMMENDED ACTION: Information

EXECUTIVE SUMMARY:

Staff and West Point Inn Association President Robert Newcomer will give a presentation on the recently completed construction of the Emig Cabin, a fully ADA compliant accessible cabin for people with disabilities located at the West Point Inn.

FISCAL IMPACT: YES **NO** ☒ **FISCAL YEAR:**

FISCAL IMPACT NARRATIVE:

N/A

BACKGROUND:

The West Point Inn Association has recently completed construction of a new, fully accessible cabin for people with disabilities. The project was funded through the Ernest Edward Emig Trust. Ernest Emig was a former member of the West Point Inn Association who upon his passing created a fund for the betterment of Mt. Tamalpais. The trust contributed over \$200,000 for this project, which started construction in 2015.

The new cabin has the following features:

- A wheelchair accessible ramp connected to the Inn's accessible parking space.
- A ramp also connects the Emig Cabin to the West Point Inn.
- Full bathroom has an accessible toilet, wheel chair accessible sink and roll-in/walk-in shower with fold-up bench seating.
- Hot water is available for those with a disability.
- One double bed that affords under the bed clearance for the use of a Hoyer lift.
- One roll-away bed for an assistant.
- Electricity to charge or operate medical equipment or for ambient lighting during the stay for disabled visitors

- Radiant heater when the cabin is occupied by a guest with a disability.

The West Point Inn Association has revised their website information for booking and reservation policies to reflect the new facility.

STRATEGIC PLAN ALIGNMENT:

This project aligns Goal 4: Environmental Stewardship - "We will serve the community and manage the environmental assets entrusted to us for the benefit of present and future generations."

| | | | | |
|---------------------|-------------------------|-------------------------------------|----|-------------------------------------|
| REVIEWED BY: | A.S.D Manager/Treasurer | <input type="checkbox"/> | NA | <input checked="" type="checkbox"/> |
| | General Counsel | <input type="checkbox"/> | NA | <input checked="" type="checkbox"/> |
| | General Manager | <input checked="" type="checkbox"/> | NA | <input type="checkbox"/> |

ATTACHMENTS:

None



ITEM No. 3
MEETING DATE: Sept 21, 2017
MEETING Watershed
Committee /
Board of Directors

STAFF REPORT

SUBJECT: CCNB Contract Agreement

SUBMITTED BY: Janet Klein, Natural Resource Program Manager
Crystal Yezman, Facilities and Watershed Division Manager

RECOMMENDED ACTION: Review and refer to the Board of Directors with recommendation to approve authorizing the General Manager to execute a Contract Agreement with Conservation Corps North Bay (CCNB) for general watershed maintenance tasks in an amount not to exceed \$130,000

EXECUTIVE SUMMARY: The Board in March 2017, approved a Cooperative Agreement with the Conservation Corps North Bay (MA 5522) under which MMWD shall initiate individual Contractual Agreements in accordance with MMWD procedures, which will provide specifics for individual work projects and become an attachment to the Cooperative Agreement. The Cooperative Agreement recognizes the two organizations' shared commitment to natural resource stewardship and youth development and provides a framework for CCNB to provide contract services for watershed maintenance tasks. District staff have identified approximately 76-crew days of trail maintenance, weed control, and pile burn support tasks suitable for CCNB crews. Staff requests approval to contract with the Conservation Corps North Bay (CCNB) in an amount not to exceed \$130,000 for the purpose of completing these tasks in the fall, winter and spring of 2017/2018.

FISCAL IMPACT: YES ☒ NO ☐ **FISCAL YEAR:** 2018

EXPENDITURES

| | |
|-------------------------------|-------------------|
| Budgeted Amount | \$130,000 |
| Budget Augmentation Requested | \$ |
| | \$ |
| | \$ |
| TOTAL EXPENDITURES | \$ 130,000 |

FUNDING SOURCES

| | |
|----------------------|-------------------|
| Operating Fund | \$ 130,000 |
| Capital Fund | \$ |
| Other | \$ |
| Operating Reserves | \$ |
| TOTAL SOURCES | \$ 130,000 |

FISCAL IMPACT NARRATIVE:

There are sufficient funds in this year's budget for this contract.

BACKGROUND:

Conservation Corps North Bay (CCNB) is the nation's oldest local non-profit youth conservation corps. Established in 1982 as Marin Conservation Corps, CCNB provides year-round job training and education services to over 120 youth-- preparing young people from all corners of the North Bay to become strong environmental leaders, develop an ethic of service and create strong, sustainable communities. The CCNB relationship with the district started at its conception; they now conduct projects on the watershed, along Lagunitas Creek and at tank sites, involving fuel break construction, trail work, habitat restoration, invasive plant management, and erosion control services. As a recognized local nonprofit conservation corps, CCNB is eligible for special bond funding, and has matched dollar for dollar some of our trail and vegetation management contracts in labor grants.

On March 21, 2017 the District renewed its Cooperative Agreement with CCNB that recognizes the special relationship we have. The Cooperative Agreement establishes the overall framework for the District's relationship with CCNB and address issues like the methods of submitting work proposals, types of work that will be performed, how the District's projects for CCNB are prioritized, supervision of the work, assignment, indemnity, mediation and arbitration. Under the Cooperative Agreement, the District enters into separate contracts with CCNB for each specific project which define the scope of work for a project and fees and payment for the work.

Each fall, the District identifies a variety of maintenance tasks that exceed our current staffing levels and that align well with CCNB's mission and with the knowledge, skills, and abilities of its corps members. For the coming season, staff have identified approximately 76 combined crew-days of trail maintenance, weed control, and pile burning work that advance the District's management objectives and will provide training and skill building opportunities for CCNB corps members. Staff requests approval to contract with the Conservation Corps North Bay (CCNB) in an amount not to exceed \$130,000 for the purpose of assisting with these general watershed maintenance tasks this coming winter and spring. All work to be completed during Fiscal Year 2017.

STRATEGIC PLAN ALIGNMENT: This project meets a high priority objective of the strategic plan. Specifically, the requested action aligns with the district's Strategic Plan Goal 4 (Environmental Stewardship), Strategy 3 (Enhance ecosystem resiliency), and Objective 1 (Develop and implement an adaptive "Healthy Forests" plan). It also will provide information that can further three objectives under Strategy 5 (Reduce MMWD carbon footprint): Objective 6 (Assess carbon sequestration credits) and Objective 7 (Assess portable cogeneration technology for forest management on Mt. Tamalpais Watershed) and Objective 8 (Evaluate water supply implications of a major Mt. Tamalpais watershed fire).

| | | | | |
|---------------------|-----------------|-------------------------------------|----|-------------------------------------|
| REVIEWED BY: | Finance Manager | <input checked="" type="checkbox"/> | NA | <input type="checkbox"/> |
| | General Counsel | <input type="checkbox"/> | NA | <input checked="" type="checkbox"/> |
| | General Manager | <input checked="" type="checkbox"/> | NA | <input type="checkbox"/> |

ATTACHMENTS:

1. Contract Agreement for MA5522, Scope of Work.

**Attachment 1: Contract Agreement to MA5522, Cooperative Agreement between
Conservation Corps North Bay and Marin Municipal Water District**

Scope of Work

Under direct supervision by MMWD Watershed Maintenance Staff, provide labor and hand tools necessary to conduct fuel break maintenance, habitat restoration, pile burn support, and trail maintenance in the Mt Tamalpais Watershed. Specific activities will include:

1. Weed Control:

- a. Brush cutting or pulling followed by piling of French broom, Scotch broom, Spanish broom, blackwood acacia, hawthorn, cotoneaster, and other woody weed species in existing fuelbreaks as directed. Brush cutting work must be completed by February 1, 2018 unless otherwise specified by District staff.
- b. Manual uprooting followed by piling or bagging of herbaceous weed species such as greater periwinkle, panic veldt grass, Harding grass, and other weeds as directed.
- c. The expected number of full crew days for this task is 30.

2. Pile Burn Support:

- a. CCNB crews will work under the direct supervision of District staff.
- b. Required PPEs for Corpsmember pile burning: nomex pants & long-sleeve shirt, full leather gloves, wildland fire goggles, full leather boots and genuine wildland fire helmet with shroud.
- c. The expected number of full crew days for this task is 14.

3. Trail Maintenance:

- a. Tread maintenance to include; cleaning water bars, out-sloping and installing rolling dips to promote drainage and removal of trip hazards
- b. Brushing trail corridors to improve access.
- c. Maintaining existing trail structures such as bridges, retaining walls and stairs.
- d. Installing rock and/or wooden crib stairs with materials and direction provided by District staff.
- e. Decommission non-system trails as directed.
- f. The expected number of full crew days for this task is 32.

Payment will be made for time and materials based on the following schedule of costs in an amount not to exceed **\$130,000**.

Calendar Year 2017 Charges are based on a labor rates, materials and equipment expenses as

follows and as required: Dump truck, \$300.00; Extra vehicle, \$150.00 per day; Disposal costs and materials are billed at cost plus 10% handling. The hourly labor rate is \$30.75 per Corpsmember hour and \$59.75 per Supervisor hour. **"A typical crew of five (5) Corpsmembers and 1 Supervisor is \$1,708.00 per day, plus expenses. A strike crew of three (3) Corpsmembers and 1 Supervisor is \$1,216.00 per day, plus expenses.**

Calendar Year 2018 Charges are based on a labor rates, materials and equipment expenses as follows and as required: Dump truck, \$300.00; Extra vehicle, \$150.00 per day; Disposal costs and materials are billed at cost plus 10% handling. The hourly labor rate is \$30.25 per Corpsmember hour and \$62.75 per Supervisor hour. **"A typical crew of five (5) Corpsmembers and 1 Supervisor is \$1,792.00 per day, plus expenses. A strike crew of three (3) Corpsmembers and 1 Supervisor is \$1,290.00 per day, plus expenses.**

The expected number of days for this project is approximately **seventy-six (76) full crew days.** Billing includes travel time to and from the CCNB Center.



MARIN MUNICIPAL WATER DISTRICT

ITEM NO. 4

MEETING DATE: September 21, 2017

MEETING: Board of Directors /
Watershed
Committee

STAFF REPORT

SUBJECT: Azalea Hill IS/MND

SUBMITTED BY: Nicholas Salcedo, Senior Management Analyst
Crystal Yezman, Facilities and Watershed Division Manager
Facilities and Watershed

RECOMMENDED ACTION: Information

EXECUTIVE SUMMARY:

On Friday, September 8, 2017, the District released an Initial Study and Proposed Mitigated Negative Declaration (IS/MND) for an amendment of its Road and Trail Master Plan (RTMP) and the Restoration of Azalea Hill Project. The proposed amendment and project aim to remove approximately 4.4 miles of non-system, or unofficial roads and trails from Azalea Hill and restore those areas to natural habitat. Key to the project is adopting what is now called Liberty Gulch Road, treating its erosion problems, and converting it to a small vehicle road (or multi-purpose route). Also included in the project are erosion treatments on the existing Azalea Hill Trail, erosion treatment in the parking lot and improving visitor amenities in the area. Upon its completion, the project would prevent up to an estimated 4,377 cu.yds of sediment from entering Azalea Hill's creeks or Alpine Lake over the next 20 years, and would restore approximately one acre of habitat.

Pursuant to CEQA, the IS/MND were forwarded to appropriate agencies and interested parties for a 30 day review and comment period. Comments on the IS/MND must be received by 4:00pm on Monday, October 9, 2017. Adoption of the Proposed MND is scheduled for consideration at the regularly scheduled Board meeting on Tuesday, October 17, 2017, which begins at 7:30pm. Staff is available to provide more information on the project, its background, proposed mitigation measures, best management practices or environmental analysis between now and the close of the written public comment period.

FISCAL IMPACT: YES _____ NO X **FISCAL YEAR:** _____

FISCAL IMPACT NARRATIVE:

N/A

BACKGROUND:

Azalea Hill, specifically the network of approximately seven miles of roads and trails that crisscross it and the sedimentation and environmental impacts they create, were identified in the original RTMP for treatment. Of note are serpentine soils in several areas that are highly erosive and that support many special status plant species. Approximately six of the seven miles are non-system, or unofficial routes. Decommissioning the majority of these routes and treating the remaining routes to strictly minimize their erosion would prevent an estimated 4,377 cu.yds of sediment from entering Azalea Hill's creeks or Alpine Lake over the next 20 years, and would restore approximately one acre of habitat.

Also at issue is the one official route over Azalea Hill. It does not provide an adequate connection from the "lakes" area to the "Pine Mountain" area and is in poor condition, some sections are too steep to be sustainable. Treating this route for erosion (converting the road portion to a trail and re-routing other portions to avoid sensitive habitats), and storm-proofing the old, existing Liberty Gulch Road would provide sustainable routes for all users (hikers, equestrians, cyclists and district patrol and response staff) between the lakes area to the Pine Mountain area. Additionally, improved visitor amenities at the existing Azalea Hill parking lot would benefit the visitor experience, educate them about the sensitive habitat in the area and the importance of keeping on designated trails.

PUBLIC OUTREACH EFFORTS

Since the adoption of the RTMP in 2005, staff has been exploring opportunities to treat the erosion, reduce environmental impacts and improve connectivity on Azalea Hill. This current effort began in late 2015 when, at a Marin County Parks workshop, staff generally heard favorable public comments about an Azalea Hill project. These comments were presented to the Watershed Committee on December, 10, 2015. Staff began developing the project description, presented to the Watershed Committee on June 16, 2016, so it could begin environmental analysis and seek public comments. The district held two public hikes, on July 23, 2016, and August 27, 2016, where it explained the project and objectives to over two dozen interested parties. On October 6, 2017, staff presented the proposed project at the Marin Project Coordination Meeting, and followed with a staff led a hike for those regulatory agency representatives on October 17, 2016. Also, on November 4, 2016, staff held a third public hike for those that missed the earlier hikes. Further, staff met with tribal representatives for the Federated Indians of Graton Rancheria on March 13, 2017.

Based on feedback from interested parties, the regulatory agencies and in large part, vegetation ecologists, staff revised the project to minimize its potential impacts to sensitive habitats, notably serpentine plant communities and creek and wetland areas. In the words of one regulator, staff has worked to make the proposed project "... as light on the land as possible."

The District's Public Information Office assisted in the public release of the IS/MND with a press release, including one to the Marin Independent Journal on September 11, 2017, and followed up with other social media outlets.

During the current public comment period, staff will continue to be available to answer questions or provide more information on the proposed project, its associated mitigation measures, best management practices or environmental analysis. Staff will collate all written comments received prior to the comment period close and will address them prior to the October 17, 2017 Board meeting.

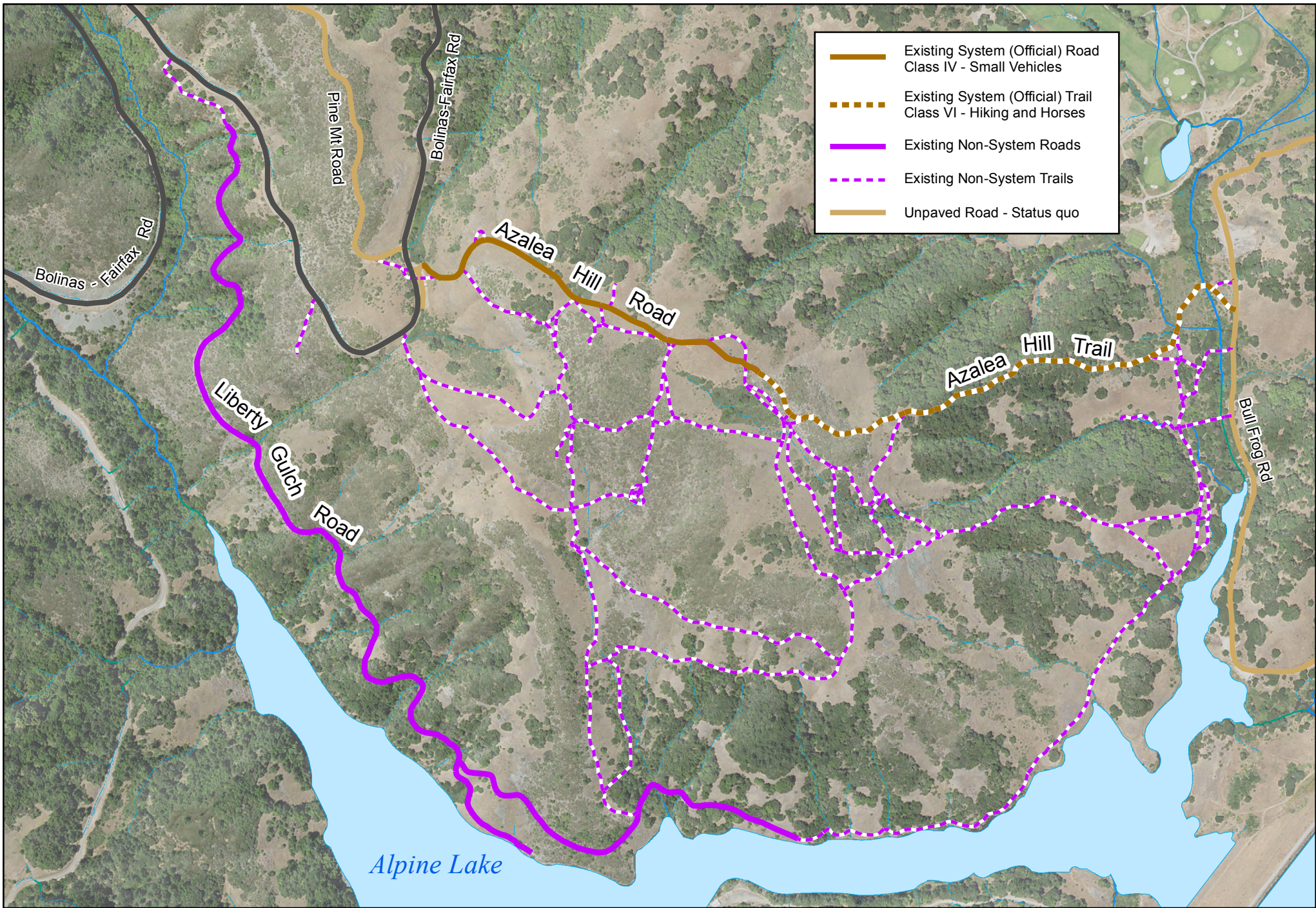
STRATEGIC PLAN ALIGNMENT:

The proposed plan amendment and project align with the district's Strategic Plan Goal 4 (Environmental Stewardship), Strategy 3 (Evaluate current visitor access and activities on watershed lands consistent with the overall goals of watershed stewardship), and Strategy 4 (Implement best environmental management practices).

| | | | | |
|---------------------|-------------------------|-------------------------------------|----|-------------------------------------|
| REVIEWED BY: | A.S.D Manager/Treasurer | <input type="checkbox"/> | NA | <input checked="" type="checkbox"/> |
| | General Counsel | <input type="checkbox"/> | NA | <input checked="" type="checkbox"/> |
| | General Manager | <input checked="" type="checkbox"/> | NA | <input type="checkbox"/> |

ATTACHMENTS:

1. Figures 1 – 6 of the Azalea Hill Restoration Project IS/MND

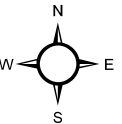


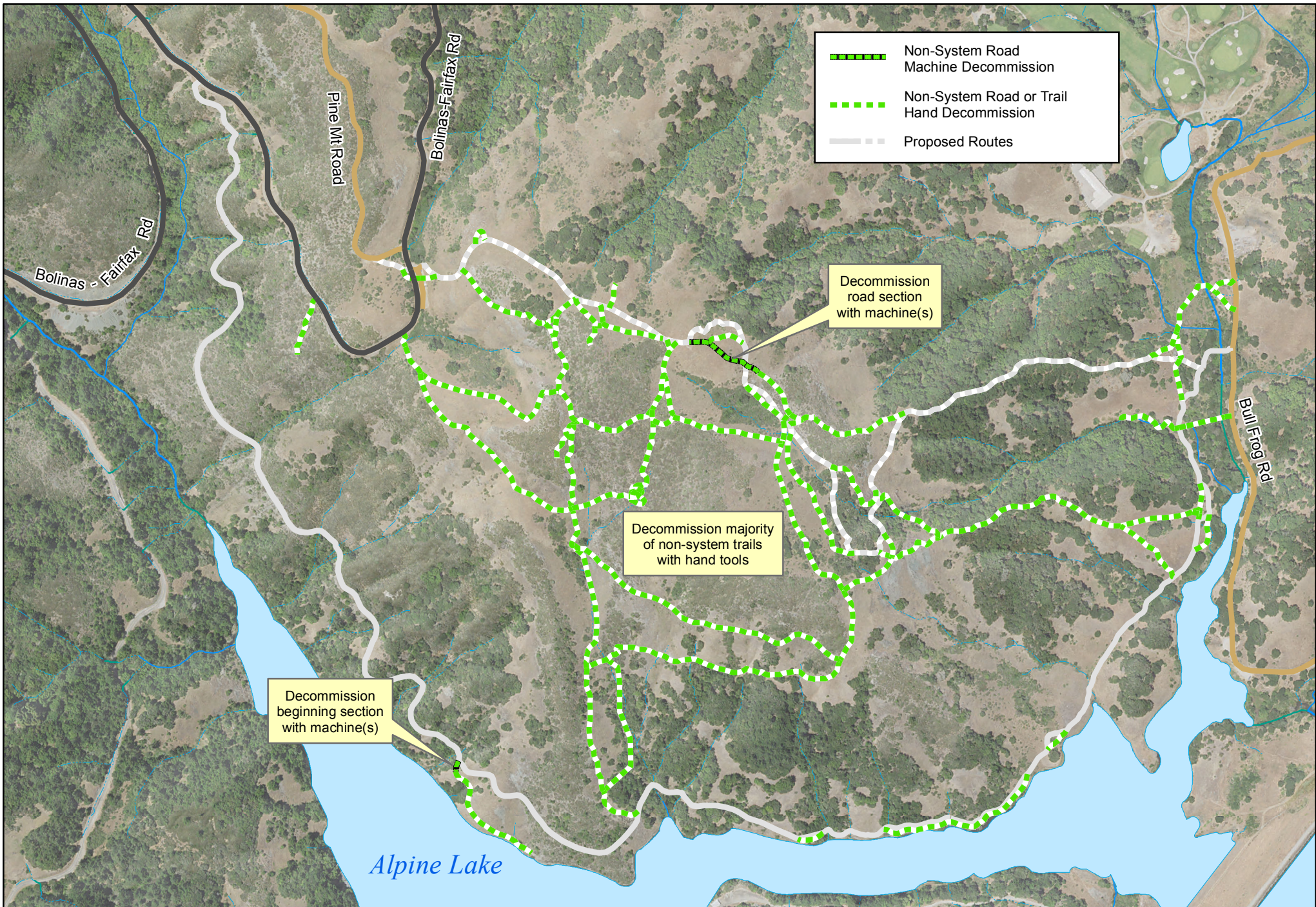
Sources: "Mt. Tamalpais Watershed Road and Trail Management Plan" (2005), MMWD Sky Oaks HQ GIS, MarinMap. Orthophoto: US NAIP 2014

Prepared by MMWD Sky Oaks Wtrshd HQ GIS
January 2017

0 0.125 0.25 0.5 Miles

1:6,800



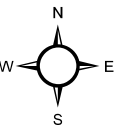


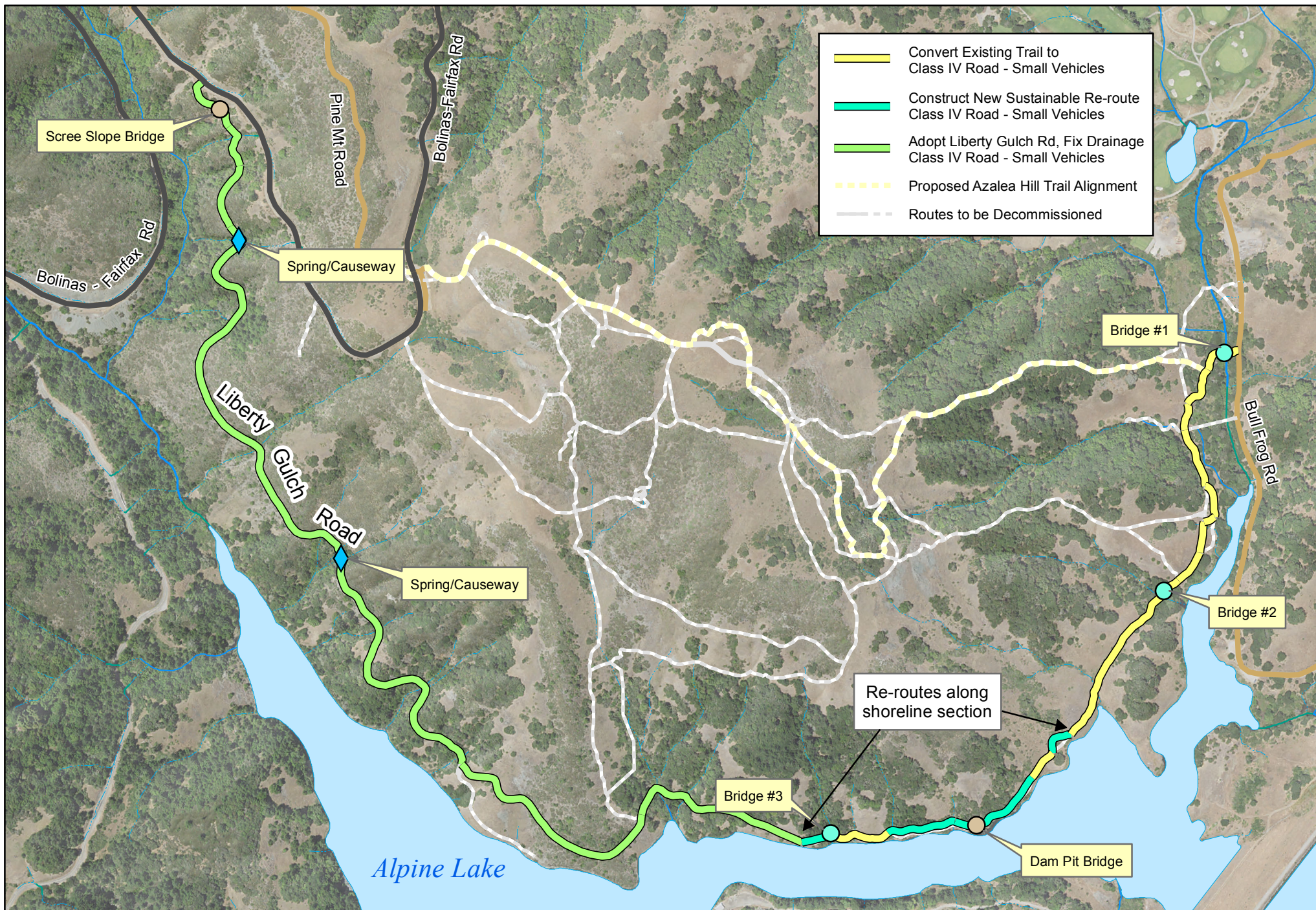
Sources: "Mt. Tamalpais Watershed Road and Trail Management Plan" (2005), MMWD Sky Oaks HQ GIS, MarinMap. Orthophoto: US NAIP 2014

Prepared by MMWD Sky Oaks Wtrshd HQ GIS
June 2017

0 0.125 0.25 0.5 Miles

1:6,800



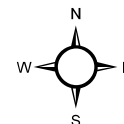


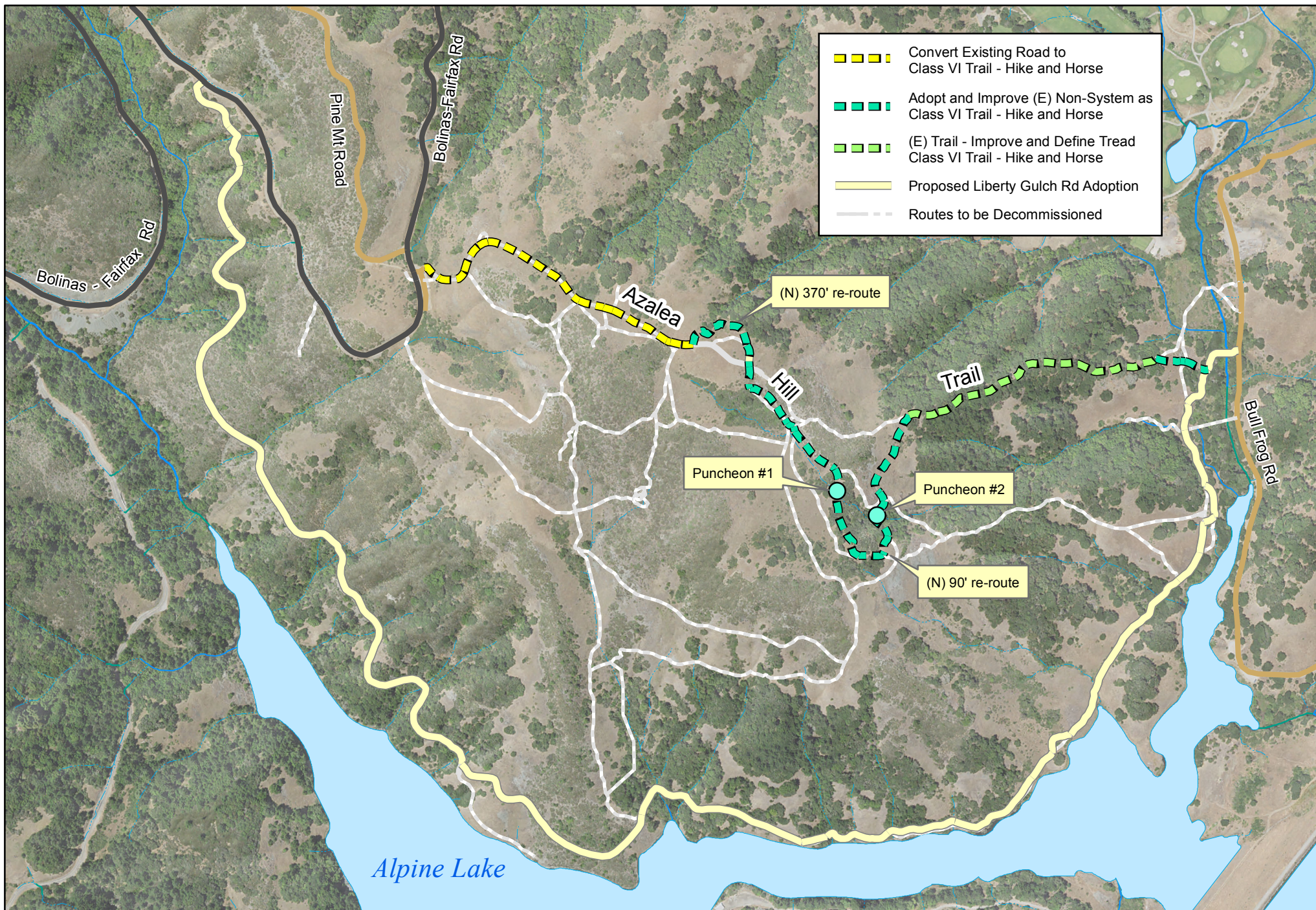
Sources: "Mt. Tamalpais Watershed Road and Trail Management Plan" (2005), MMWD Sky Oaks HQ GIS, MarinMap. Orthophoto: US NAIP 2014

Prepared by MMWD Sky Oaks Wtrshd HQ GIS
June 2017

0 0.125 0.25 0.5 Miles

1:6,800



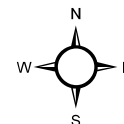


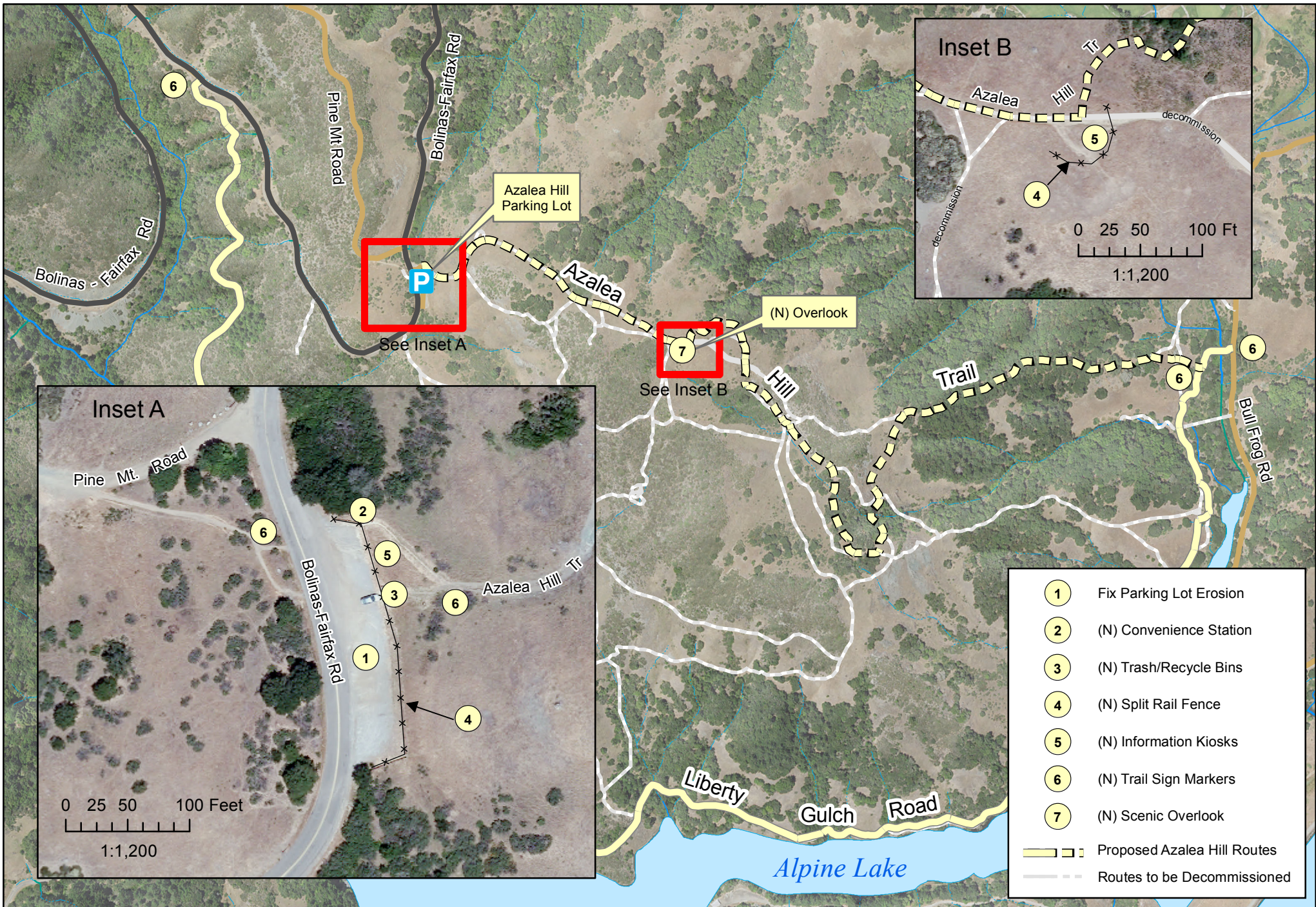
Sources: "Mt. Tamalpais Watershed Road and Trail Management Plan" (2005), MMWD Sky Oaks HQ GIS, MarinMap. Orthophoto: US NAIP 2014

Prepared by MMWD Sky Oaks Wtrshd HQ GIS
June 2017

0 0.125 0.25 0.5 Miles

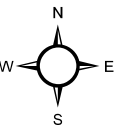
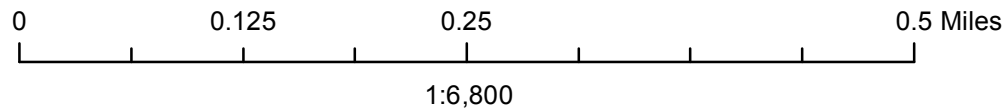
1:6,800





Sources: "Mt. Tamalpais Watershed Road and Trail Management Plan" (2005), MMWD Sky Oaks HQ GIS, MarinMap. Orthophoto: US NAIP 2014, MMap 2014

Prepared by MMWD Sky Oaks Wtrshd HQ GIS
June 2017





MARIN MUNICIPAL WATER DISTRICT

ITEM NO. 5
MEETING DATE: September 21, 2017
MEETING: Board of Directors /
Watershed
Committee

STAFF REPORT

SUBJECT: Park Ranger Video

SUBMITTED BY: Don Wick, Chief Ranger
Crystal Yezman, Facilities and Watershed Division Manager
Facilities and Watershed

RECOMMENDED ACTION: Information

EXECUTIVE SUMMARY:

This year marks the 100th year anniversary of the MMWD Rangers. In June of this year, videographer, local resident and avid watershed visitor, Gary Yost, completed his making of a video recognizing the Rangers, titled, "A Day in the Life of a Watershed Ranger." Staff will present the video at the Watershed Committee meeting.

FISCAL IMPACT: YES _____ **No** X **FISCAL YEAR:** _____

FISCAL IMPACT NARRATIVE:

N/A

BACKGROUND:

The video, "A Day in the Life of a Watershed Ranger," which runs just under 15-minutes, will be shown at the meeting. It celebrates the MMWD Ranger through interviews and narration, and shows what a Ranger's day entails.

This year marks the 100-year anniversary of our Park Ranger Program. Our current Ranger staff consists of Chief Ranger Don Wick, Senior Ranger Phil Johnson, and Park Rangers Matt Cerkel, Barry Dobbins, John McConneloug, and Brett Pedisich. They do an outstanding job of safeguarding thousands of acres of watershed land.

In 1917, MMWD created the Park Ranger Program in order to preserve Mt. Tamalpais as a public park. For the last 100 years, MMWD's preservation efforts have served as the model for all parks and open spaces in Marin County, the Bay Area and beyond. Today there are over 140,000 acres of park lands preserved in Marin, largely built upon the preservation efforts of MMWD.

When the District first approved a plan to employ patrolmen (park rangers) in 1917, they were first hired to oversee fire patrol, firefighting and to enforce watershed protection rules and regulations. The patrolmen would be required to wear a uniform and supply their own horses.



Early MMWD park ranger

From 1917 until the 1970s patrolmen were appointed as special deputy sheriffs and as deputy game wardens. In the mid 1970s the patrolmen were reclassified as park rangers to allow for peace officer status without having to be deputized by an outside agency.

Since 2010 MMWD has been a fully accredited POST (California Commission on Peace Officer Standards and Training) law enforcement agency and part of FIRESCOPE (Firefighting REsources of California Organized for Potential Emergencies), with the Park Rangers serving as peace officers, wildland firefighters, EMTs, Search and Rescue Specialists, and park ambassadors.



MMWD Patrolman's Badge: The Patrolman job titled was used by MMWD park rangers from 1917 until 1975



2010-2017 MMWD Park Ranger Badge



2017 MMWD Park Ranger Badge

STRATEGIC PLAN ALIGNMENT:

The requested action aligns with the district's Strategic Plan Goal 3 (Communications), Strategy 2 (Develop effective community outreach), specifically to further Goal 4 (Environmental Stewardship), Strategy 6 (Ensure public safety is maintained on the watershed).

| | | | | |
|---------------------|-------------------------|-------------------------------------|----|-------------------------------------|
| REVIEWED BY: | A.S.D Manager/Treasurer | <input type="checkbox"/> | NA | <input checked="" type="checkbox"/> |
| | General Counsel | <input type="checkbox"/> | NA | <input checked="" type="checkbox"/> |
| | General Manager | <input checked="" type="checkbox"/> | NA | <input type="checkbox"/> |

ATTACHMENTS:

None



MARIN MUNICIPAL WATER DISTRICT

ITEM No. 6
MEETING DATE: September 21, 2017
MEETING: Board of Directors /
Watershed
Committee

STAFF REPORT

SUBJECT: Draft 2018 Tamalpais Lands Collaborative Work Plan

SUBMITTED BY: Crystal Yezman, Facilities and Watershed Division Manager

RECOMMENDED ACTION: Information

EXECUTIVE SUMMARY:

The Tamalpais Lands Collaborative (TLC) will hold an Executive Team public meeting at the Marin Art and Garden Center on Saturday, October 26, 2016, 4:30-6:00pm, where the draft TLC 2018 Work Plan will be presented for public comment. The most current draft plan is presented to the Watershed Committee today for its review and comment. The plan includes work related to the Resilient Forest Project, Log Cabin at Phoenix Lake, the West Peak Restoration project, Potrero Meadow Restoration project, and the Azalea Hill Restoration project. The final 2018 TLC Work Plan will be brought back to the Board for approval.

FISCAL IMPACT: YES **No** x **FISCAL YEAR:**

FISCAL IMPACT NARRATIVE:

N/A

BACKGROUND:

The TLC 2018 Work Plan (attached) will be presented at a public meeting of the TLC Executive Committee ("Tam Talk") on Saturday, October 26, 2017, 4:30-6:00pm, at the Corte Madera Community Center. According to the TLC Memorandum of Understanding the partner agencies agreed to develop a "5 Year List" of projects and programs that are compatible with the purpose and vision of the TLC so as to guide fundraising activities. A comprehensive 5 Year vision document and project and program list for the TLC was approved by the MMWD Board of Directors on November 10, 2014. A revised list of projects was developed this year (attached). In order to provide more discrete accounting of activities, agency staff have developed an annual work plan that details project and programs implementation, fundraising, and volunteer engagement. This work plan is reviewed and approved by agency executives and elected boards.

The 2018 work plan includes both program and project support. Program support includes the continuation and expansion of the mountain-wide habitat restoration, weed management,

citizen science, volunteer stewardship and youth education programs. These programs are integrally linked to, and add capacity to the District's existing program areas. Key ongoing MMWD projects include the Resilient Forest Project, West Peak Restoration Feasibility Study and the Phoenix Lake Log Cabin. New projects include Azalea Hill Restoration and Potrero Meadow Restoration

STRATEGIC PLAN ALIGNMENT:

The requested actions aligns with the district's Strategic Plan Goal 4: Environmental Stewardship, Strategy 2 – Increase community engagement in stewardship of Mt. Tamalpais as water and community asset: Objective 1 - Develop projects and programs for the Tamalpais Lands Collaborative and Objective 2 - Increase volunteer and education program capacity through public-private and not-for-profit partnerships.

| | | | | |
|---------------------|-------------------------|-------------------------------------|----|-------------------------------------|
| REVIEWED BY: | A.S.D Manager/Treasurer | <input type="checkbox"/> | NA | <input checked="" type="checkbox"/> |
| | General Counsel | <input type="checkbox"/> | NA | <input checked="" type="checkbox"/> |
| | General Manager | <input checked="" type="checkbox"/> | NA | <input type="checkbox"/> |

ATTACHMENTS:

1. Draft TLC 2018 Work Plan
2. Draft TLC Revised Project and Program List ("5 year List")



DRAFT 2018 WORK PLAN FOR ONE TAM INITIATIVE

The following programs and projects are under consideration by the TLC in 2018 to improve the health of the mountain, enrich the experiences of its visitors, and cultivate and educate a new generation of stewards. They build from, and sustain successful 2017 work, and will be implemented as funding becomes available. Projects reflect partner agency priorities, and will include all necessary agency permitting, compliance, and community engagement and public review. Each adds capacity to existing partner programs and collectively increases the mountain-wide reach and impact. For more information, including the proposed *2018 TLC Approach to Community Engagement*, please visit: www.onetam.org.

Community & Conservation Programs

Volunteer Stewardship programs engage youth and volunteers in service-based habitat restoration, monitoring and trails projects.

- Lead 82 volunteer stewardship workdays for restoration and trail maintenance projects
- Join agency staff in leading approximately 20 volunteer stewardship workdays for restoration and trail maintenance projects
- Increase site-specific stewardship at volunteer work sites through monthly staff and intern follow-up work days
- Conduct a total of 4 Bioblitzes on MCP, NPS and/ or State Parks lands

Community (Citizen) Science programs authentically engage volunteers and youth in science-based research inventory and monitoring projects.

- Lead 38 community science program events
- Launch One Tam interactive website for cloud-based wildlife image cataloguing, image display, and sharing real-time analytics for the Wildlife Picture Index Project (WPIP)
- Analyze results from Phase One of the WPIP in the Lagunitas Creek Watershed, and sustain Phase Two image cataloguing in the Redwood Creek Watershed
- Integrate Phases One and Two into one comprehensive mountain-wide WPI program
- Train volunteers to catalog wildlife photos remotely using the interactive WPIP website
- Recruit and train 85 volunteers and 120 students, and sustain five community and academic partnerships to support WPIP cataloguing
- Double volunteer participation in wildlife camera project fieldwork
- Develop and pilot a high school (or middle school) science program to build awareness about Mt. Tam's wildlife
- Initiate the development of WPIP HS curriculum in partnership with Marin County Schools Superintendent's office
- Support the monitoring of re-introduced Western pond turtles in the Redwood Creek Watershed
- Initiate an assessment of existing agency community science, and inventory and monitoring programs to determine which could be supported by the One Tam Community Science Program

Conservation Management work strategically advances weed control, habitat restoration, ecological monitoring and sustainable practices at a mountain-wide scale.

- Evaluate and analyze 2017 early detection, grassland and rare plant monitoring results
- Hire and train 2 One Tam Conservation Management Team 6-mos Seasonal staff to perform field work mountain wide
- Continue mountain-wide rare plant monitoring program, and weed treatment and rapid response programs
- Expand support to help inventory an additional 25% of Mt Tam's priority weeds, treating all new detections
- Assess the feasibility of expanding the EDRR program to adjacent lands, specifically Samuel P. Taylor State Park.
- Sustain joint NPS-State Parks vegetation management program throughout the Redwood Creek Watershed
- Improve data sharing, storage and analysis with further software development with Calflora Database; provide technical support to other Ca. State Parks
- Document protocols for early detection and serpentine endemic occupancy project

Youth, Engagement & Community Programs provide educational, service-based, and career development opportunities for local youth, plus outreach, interpretive and naturalist programs for interested community members.

- Deliver 40 education, naturalist, community building events, and field trips to raise awareness and build stewardship
- Lead One Tam LINC (*Linking Individuals with Natural Communities*) program and provide advanced summer internships for 2015, 2016, & 17 LINC youth participants, **plus explore possibly of implementing vocational training opportunities**
- Coordinate and support youth and school participation in the Trout in the Classroom program
- Strengthen partnerships with 11 community organizations to engage youth in stewardship programs
- Lead, administer and evaluate 3 mountain-wide multi-agency volunteer days
- Strengthen One Tam Roving Ranger program, to include onboarding one additional staff member dedicated to outreach and community engagement, developing climate change programming, as well as participating in 40 events and activities in support of TLC partners
- Facilitate 10 naturalist walks involving multiple TLC partners, to include delivering programs in Spanish.
- Provide 45 presentations and outreach at local community events, meetings and trailheads.
- Increase College of Marin participation in Academic Internship Program
- Organize multi-agency volunteer tracking and event coordination through web portal on www.onetam.org and the Hands-on-Connect database to streamline volunteer registration and statistics analysis
- Support One Tam Backpack Program in partnership with Marin County libraries and Community Centers to facilitate equitable access

One Tam Wildlife Symposium & Measuring the Health of the Mountain: A Report of Mt. Tamalpais' Natural Resources (2016)

- Host a 1-day *Wild Side of Tam* Symposium (Oct 26, 2017)
- Plan a 1-day Symposium for fall 2018 – topic to be determined

- Publish 2 articles/papers on the findings from the *Measuring the Health of the Mountain* findings
- Maintain the information in How Healthy is Mt Tam? An Interactive Web Tool

Large-Scale Inventories provide a comprehensive, big-picture view of the mountain's resources will allow managers to prioritize restoration and protection efforts and allocate resources in new ways.

- Complete initial seeps and springs inventory work; assess feasibility and capacity to expand to southern Redwood Creek Watershed
- Complete pilot pollinator study
- Complete Phase 1 and initiate Phase 2 of the bat inventory, to include radio telemetry and maternity/roosting colony assessment
- Initiate fundraising and planning for a mountain-wide (possibly County-wide) vegetation map

Initiate TLC Five Year Strategy Development (2019-2023) to guide the TLC's goals and outcomes for the next five years.

- Review and evaluate 2014-2018 goals and outcomes
- Prepare draft goals, outcomes and identify potential programs and projects for implementation
- Initiate outreach and community engagement to solicit feedback
- Prepare draft Strategy

Complete Longitudinal TLC Partnership Research to include publishing a report and articles on the *Value, Impact & Benefit of Land Stewardship Partnerships*.

- Publish the final report on the findings from long-term study
- Deliver presentations on the findings of the final report
- Prepare academic and practitioner articles for local and national publications

Proposed Projects¹

TLC Projects are arrayed in the three themes below – Wetlands & Waterways; Legacy Projects; and Signature Trail Corridors. The following projects, specifically the associated bulleted actions are proposed for implementation in 2018.

Wetlands & Waterways

Redwood Creek Juvenile Coho Habitat Restoration - This project within will remove a portion of the rock riprap, allowing the creek to form natural habitat features so desperately needed for juvenile salmon survival. Rock removal will be targeted to maximize habitat benefits, protect sensitive resources, and avoid impacts to nearby trails.

- Continue fundraising for Phases 1 & 2
- Provide communications support, facilitate community engagement and webpage development

¹ Potential Projects are contingent on complete project-specific grant/foundation/agency funding and will only be implemented if funds are available & with appropriate board approval of agency budgets. Projects may be implemented by the Parks Conservancy and/or by agency partners. Projects either are, or will be further described on www.onetam.org.

- Initiate Phase 1 restoration

Bothin Marsh - Threatened by rising seas and strong waves caused by climate change, Bothin's shoreline is in danger of eroding and the marsh may convert to mudflats or become submerged. This project advances early planning necessary to address sea-level rise.

- Develop a working group and interdisciplinary team to support sea-level rise vision planning
- Initiate site analysis and community engagement through a series of interactive workshops
- Provide fund raising support
- Develop a vision document for the protection of natural resources, recreation and infrastructure in response to climate change and SLR that would include short and long-term adaption measures, nature-based solutions, and pilot projects.

North End Wetland Enhancement and Sea Level Rise Adaptation Project at Bolinas Lagoon - restores critical wetland habitats and reconnect the lagoon to its upland creeks, benefiting numerous wildlife species, reducing flooding on local roads, and allowing the lagoon to shift and expand with storms and sea level rise.

- Increase community engagement and explore fundraising to support future implementation

Legacy Projects

West Peak – This project assesses the methods and extent of possible restoration of West Peak, and involves both developing and assessing potential alternatives. The study is engaging a range of stakeholders in developing options that represent ecological needs, community input, and technical constraints.

- Utilize technical studies to develop a range of restoration alternatives; share with the District Board and community for review
- Refine alternatives into a preferred project alternative based on Board and community input
- Continue to facilitate outreach and community engagement, working closely with the MMWD and community to build project interest and support.
- Increase fundraising

Log Cabin at Phoenix Lake - The storied and picturesque Log Cabin stands proudly above the shores of Phoenix Lake on Marin Municipal Water District's Mt. Tamalpais Watershed. This project offers an opportunity to save a rich cultural resource while also providing important environmental educational and volunteer service opportunities for Marin students, residents and visitors.

- Continue to assess fundraising feasibility
- Seek alternative rehabilitation support through agency and private in-kind programs

Forest Health & Resiliency - First seen in Marin County in the mid-1990s, Sudden Oak Death (SOD) has resulted in the death of millions of oak and tanoak trees in California and Oregon. This project will examine how different forestry practices affect carbon sequestration, water yield, and reforestation potential in SOD-infested areas.

- Seek funding in partnership with U.C. Davis for science-based pilot project assessment and revegetation
- Integrate community science opportunities for science-based activities, to include LINC involvement
- Provide propagation and revegetation support

Roy's Redwoods – Restoration & Sustainable Access - Long loved by the San Geronimo Valley community, Roy's Redwoods Opens Space Preserve offers visitors an immersive experience in an old growth redwood grove. This project will develop conceptual enhancement alternatives for the redwood grove and surrounding environs that maximize resource enhancement and protection opportunities, as well as ensure an engaging and sustainable visitor experience.

- Host third workshop, focused on sharing site inventory and analysis with a broad community of park users
- Complete visitor use survey; integrate findings into final site analysis report

Potrero Meadow Restoration – The health of this once-vibrant wetland has declined due to the spread of weeds, wear and tear from visitation, and poorly placed roads and trails that cut through the meadow, changing its hydrology and increasing erosion, sedimentation, and maintenance costs. The long-term goals of this project include revitalizing this unique wet meadow habitat and associated rare flora, reducing the footprint of the road, and re-aligning existing trails so that they circumnavigate the wetland, creating new vistas and areas for reflection.

- Initiate preliminary planning, scoping, cost development
- Develop an approach for future implementation, to include sequencing and project management
- Explore fundability and fundraising opportunities
- Assess approach for revegetation
- Provide communications support, facilitate community engagement, site walks and webpage development

Signature Trail Corridor Projects

Redwood Creek Trail Re-alignment – The Redwood Creek Trail stretches between Muir Woods and Muir Beach. The proposed trail project, with 1.1 miles of realignment and two new bridges over the stream, will provide passage for horses and pedestrians and protect the creek and its inhabitants.

- Complete planning and compliance
- Initiate fundraising for Phase 1
- Replace washed out bridge

Deer Park Fire Road & Dipsea Trail – The braided alignment of the storied and much-loved Dipsea Trail and Deer Park Fire Road weave in and out of Mt Tamalpais State Park and Muir Woods National Monument. This project will partially restore the natural drainage patterns throughout the trail corridor, reducing the sediment flowing into Redwood Creek as well as creating safe and sustainable trail alignments to protect natural resources and visitor access well into the future. It includes the installation of the Dipsea Bridge over Redwood Creek, which is tentatively scheduled for 2019-20.

- Continue Dipsea Trail tread and stone work improvements west of the Redwood Creek crossing
- Initiate Dipsea Bridge schematic design work, fundraising and community engagement

Azalea Hill - Rising above the shores of Alpine Lake, Azalea Hill's unique geology shelters many rare and sensitive plant species, and provides a critical recreational link between the popular Sky Oaks Ranger Station area and the more remote Pine Mountain and Carson Falls. This project will improve or remove the old roads and unofficial trails to reduce erosion and habitat fragmentation and improve the

experiences of trail users. It will further protect and restore sensitive serpentine barrens and grasslands to improve rare plant habitat.

- Continue planning and environmental compliance (MMWD)
- Provide communications support, facilitate community engagement, site walks and webpage development
- Explore fundability and fundraising opportunities

Wayfinding/Signage - This project supports assessments, design, fabrication, and installation activities needed to realize a comprehensive signage system that provides the public a safer and more enjoyable visit.

- Continue to complete State Parks signage program; designing and installing remaining signs
- Design and fabricate a replacement kiosk and signage at Rock Springs

Eligible Tamalpais Lands Collaborative Programs and Projects

| PROGRAM | THEME | TLC AGENCY LEAD | UNDERWAY | 2018 ADDITIONS |
|---|--------------------------|-----------------|----------|----------------|
| Community Stewardship | Community & Conservation | ALL | X | |
| Conservation Management | Community & Conservation | ALL | X | |
| Internships | Community & Conservation | ALL | X | |
| Large-scale Inventories & Monitoring | Community & Conservation | ALL | X | |
| One Tam Symposia, Workshops, & Conferences | Community & Conservation | ALL | X | |
| PROJECT | THEME | TLC AGENCY LEAD | UNDERWAY | 2018 ADDITIONS |
| Azalea Hill Trail Restoration | Signature Trail Corridor | MMWD | | X |
| Cataract Trail Restoration | Signature Trail Corridor | MMWD | | |
| Community Trailheads & Roving Ranger | Signature Trail Corridor | ALL | X | |
| Deer Park Fire Road & Dipsea Trail Rehabilitation | Signature Trail Corridor | NPS & CDPR | X | |
| Deer Park Trail | Signature Trail Corridor | MMWD | | |
| Dipsea Trail Bridge | Signature Trail Corridor | NPS | | X |
| Forest Health and Resiliency | Legacy Project | MMWD | X | |
| Lake Lagunitas Picnic Area | Legacy Project | MMWD | | |
| Log Cabin at Phoenix Lake | Legacy Project | MMWD | X | |
| Native Plant Nursery Feasibility | Legacy Project | TBD | | |
| North End Bolinas Lagoon Project | Wetlands & Waterways | MCP | X | |
| Planning for Climate Change at Bothin Marsh Preserve | Wetlands & Waterways | MCP | | X |
| Potrero Meadow Restoration | Legacy Project | MMWD | | X |
| Redwood Creek Juvenile Coho | Wetlands & Waterways | NPS | X | |
| Redwood Creek Trail Realignment* and Dias Ridge Trail Extension** | Signature Trail Corridor | CDPR* NPS** | X | |
| Roy's Redwoods – Restoration & Sustainable Access | Legacy Project | MCP | X | |
| Threatened Coastal Prairie | Legacy Project | TBD | | |
| Wayfinding Signs & Kiosks | Signature Trail Corridor | ALL | X | |
| West Peak Restoration Feasibility | Legacy Project | MMWD | X | |